

# NEED RETAIL SPACE?



## THE POSSIBILITIES ARE ENDLESS WITH A 20FT POP UP CONTAINER STORE

### Base model –

Create a trendy café, funky salon, vibrant wine bar or stylish store with a Royal Wolf 20ft pop up container!

Conveniently designed with security doors, laminated bench top, power, lighting, sink unit and so much more. This is the low-cost, highly flexible way to accommodate your growing business.

The Royal Wolf 20ft container is even perfect for a sporting or school canteen, coffee shop or bakery. With a Royal Wolf 20ft Pop Up Container Store, the possibilities are endless!

Call us today for a fast and easy quote on purchasing a new or pre-used Royal Wolf container perfect for your needs.



## YOU CAN DO ANYTHING IN A ROYAL WOLF





# MORE OPTIONS • MORE FLEXIBILITY!

## STRONG, SAFE AND SECURE

Royal Wolf's 20ft Pop Up Container Stores are built from steel containers with heavy duty marine grade flooring and cold room panel ceilings. They offer outstanding security features including dual opening end doors with 4 lock rods and padlock box which prevents access with bolt cutters and a high security steel side access door that can only be opened from the inside.

Easy to maintain, durable and able to be transported to even remote locations, Pop Up Container Stores can be easily fitted with a comprehensive range of optional extras.

Call us today to find out more!



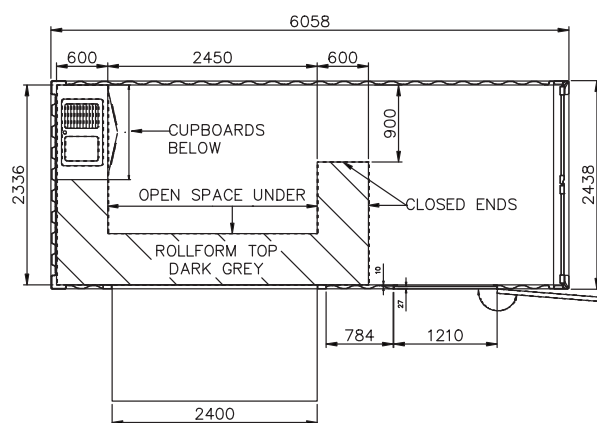
## DIMENSIONS

External		Internal	
Length	6.06m	Length	5.90m
Width	2.44m	Width	2.35m
Height	2.89m	Height	2.50
		Weight	2,220kg

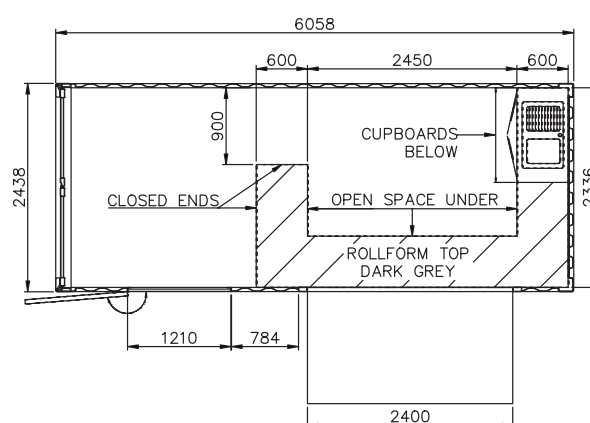
## VERSATILE APPLICATIONS

Cafe	Gallery
Retail Store	Restaurant
Event Stall	Wine Bar
Bakery	Coffee Shop
Canteen	Expo Stand

## BASE MODEL LAYOUT OPTIONS



LAYOUT 1



LAYOUT 2

\*Dimensions are approximate and may vary slightly to 'as built' containers





Image pictured not base model

# VALUE-PACKED FEATURES

## BASE MODEL

Royal Wolf's base model 20ft Pop Up Container Stores are all fitted with the following valuable features:

- Spacious - 20' "High Cube" Container (external dimensions 6058L x 2438W x 2896H)
- Secure - Dual opening end doors with 4 lock rods and padlock box, preventing access with bolt cutters
- High security steel side access door, opening only from inside
- 2.3 metre wide servery with high strength security shutter complete with gas strut and safety stay
- Durable - Heavy duty Marine grade 28mm thick ply floor (raw finish)
- Practical - Internal rear wall with welded steel "Tie" bars, giving maximum flexibility for merchandising displays and allowing equipment to be tied down during transit
- 50mm thick EPS cold room panel ceiling (white finish)
- U-Shaped roll form kitchen bench top with open space underneath allows for flexible storage solutions
- Single sink and drainer with cabinets underneath
- Stylish Flick mixer tap (cold water only)
- 6 energy efficient dimmable LED downlights
- 3 power outlets
- 1 light switch with dimmer control
- 1 smoke detector
- 15 amp "Plug + Play" power connection point
- Electrical distribution board complete with overcurrent and residual current protection on each circuit for maximum safety (Maximum load is 15 Amps)
- Flexible - Choice of colours available to reflect your brand personality
- Readily adaptable to your own business needs



## CUSTOMISATION OPTIONS - (ADDITIONAL COST APPLIES)

Royal Wolf's 20ft Pop Up Container Stores can be provisioned with a wide range of options including:

- Air Conditioned - 3.4Kw reverse cycle split system air conditioner\*\*, recessed flush into the container side wall for ease of transportation (recommended if you are running refrigeration to reduce possible overheating when the café is locked up).
- Ceiling fan (white finish, metal blades)
- Water - 25ltr hot water system\*
- Instantaneous hot water boiler\*
- Additional hand washing basin with flick mixer
- Lighting - 2 x Pendant lights mounted over bench return
- Power - 15 amp outlet
- Features & Finishes - Foundation tie down plates (Set of 4)
- Internal walls lined with 50mm thick EPS cold room panels (excludes back of doors)
- Heavy Duty commercial R10 safety vinyl flooring, complete with 100mm coving on walls for ease of cleaning (only available when walls are lined)
- Exclusions - Craneage, building approvals, connection to services and any other site works are not provided by Royal Wolf unless noted specifically as inclusions.

\*\*Electrical connection to the cafe using 15 amp "Plug + Play" inlet not available with these options.

## \*\*\*COMPLIES WITH:

AS/NZS 1170.0:2002 Structural design actions - General principles  
 AS/NZS 1170.1:2002 Structural design actions - Permanent, imposed and other actions  
 AS/NZS 1170.2:2011 Structural design actions - Wind actions  
 AS 1170.4-2007 Structural design actions - Earthquake actions in Australia  
 AS 4100-1998 (R2016) Steel structures  
 AS/NZS 3000:2007 Electrical installations  
 AS/NZS 3500.5:2012 Plumbing and drainage

\*\*\*Excludes building code compliance assessment statement (Required for permanent installations)

## PRACTICAL CONSIDERATIONS

The 20ft Pop Up Container Store is designed as a temporary building and near new shipping containers that have been modified.

For permanent installations, consulting with a building certifier is recommended. Development approvals are based on many variables and are specific to locations, uses and many other factors.

We further recommend you consult your local authority to discuss your intended use as Food Safety Regulations may vary between locations.

If you have any questions at all, please give us a call. We're happy to help in any way we can!

# 1300 881 851

ROYALWOLF.COM.AU

## YOU CAN DO ANYTHING IN A ROYAL WOLF

Last Updated: 16/06/2021

